

Straightaway 865 Bottom Rolling Door Gear

FOR DOORS ON SINGLE AND DOUBLE PARALLEL TRACKS

APPLICATION

Bottom rolling straight sliding doors for factories, warehouses, garages etc. Single or multiple runs of tracks.

RANGE

Maximum door weight 250kg (550 lb)
Maximum door height 3.5m (11ft)

Consider wind pressure in exposed positions, if in doubt consult gear makers. Timber door thickness 44mm only. Metal door thickness 50mm.

DOOR CONSTRUCTION

Timber doors with deep bottom rails to accommodate bottom rollers. Fix rollers clear of stiles. Metal doors angle framed, sheeted inside or out. Ensure adequate bracing. Weatherhoods are recommended on external doors.

FIXING

Track brackets usually side fixed. Floor track set flush or raised. Lateral adjustment with double side fixed brackets.

BOTTOM ROLLERS, TIMBER DOORS

Roller bearings, machined cast grey iron wheels. 86-431.

BOTTOM ROLLERS, METAL DOORS

Roller bearing, machined cast grey iron wheels, undrilled steel frame 86-430.

BOTTOM TRACK

86-1 Steel. Lengths 1.8m to 3.0m.

TOP GUIDES

8-315 for metal doors, 8-344 for timber doors.

TOP TRACK

8-25 Safety pattern, galvanised steel to BS EN 10142. Lengths 1.8m to 3.0m.

TOP TRACK BRACKETS

Malleable iron and steel. See drawing and full range details on pages 3-4.

WEATHERHOODS

3-701 Galvanised steel to BS EN 10142. Length 2.4m. 3-703 end caps.

FURNITURE

A range of door furniture and locking arrangements is available.

DOOR STOPS

97-711 side fixing at mid-height of door.

FINISHES

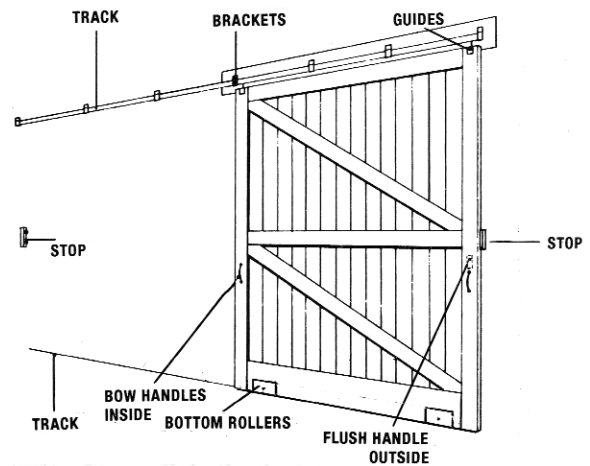
Top track galvanised; rollers, guides, brackets and furniture plated.

EXAMPLE

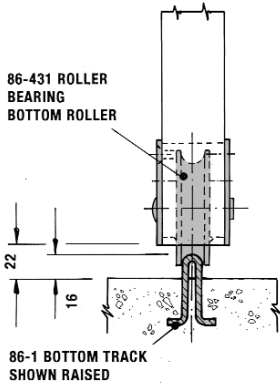
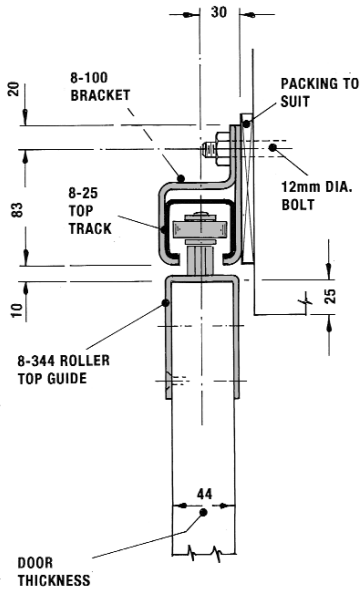
QUANTITIES FOR A SINGLE TIMBER SLIDING DOOR
2.2m wide x 2.7m high x 44mm thick, weight 210kg.

A TYPICAL BILL OF QUANTITIES

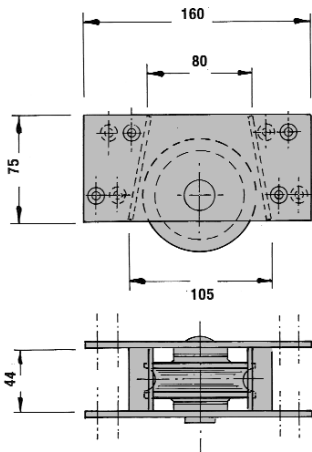
ITEM				
A	8-25	Track, 1 x 2.4m, 1 x 2.1m	45	LIN.M
B	8-100	Brackets, open, side fixing	7	NO.
C	8-051	closed end pieces	2	NO.
D	8-002	Lock joint plate	1	NO.
E		Bolts for brackets (by others)	7	NO.
F	8-344	Top guides and screws	2	NO.
G	86-431	Bottom rollers and screws	2	NO.
H	86-1	Bottom track 1 x 2.4m, 1 x 2.1m	4.5	LIN.M
J	86-014	Connecting shoe	1	NO.
K	95-605	Bow handle and screws	2	NO.
L	95-617	Flush handle and screws	1	NO.
M	97-711	Door stops	2	NO.
N		Locking arrangements IF EXTERNAL DOOR		
O	3-701	Weatherhood 2 x 2.4m	4.8	LIN.M



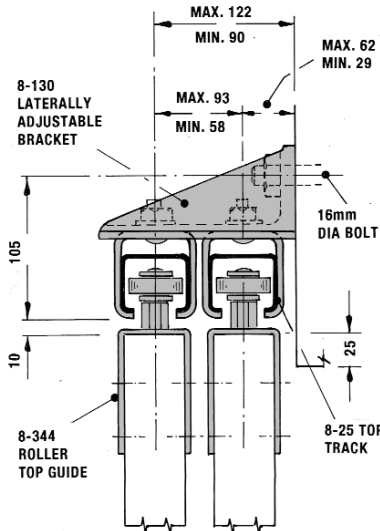
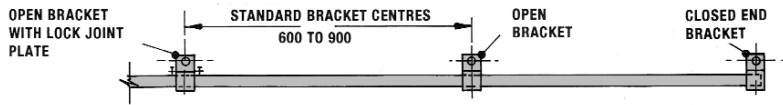
STANDARD TRACK LENGTHS			
1.8	2.1	2.4	3.0 METRES



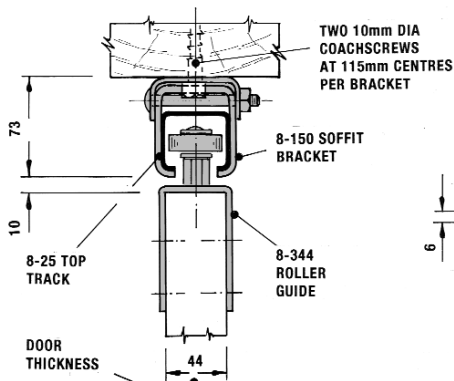
SECTION THROUGH TIMBER DOOR



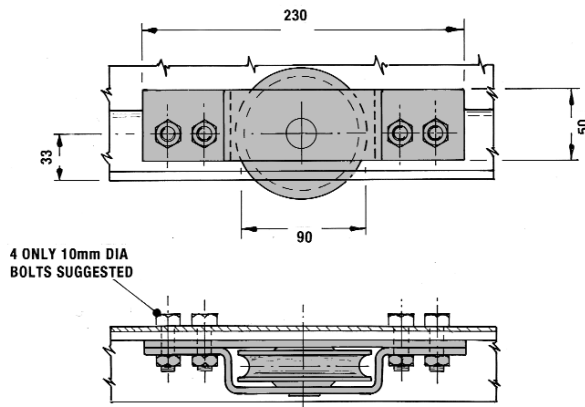
86-431 BOTTOM ROLLER FOR TIMBER DOORS



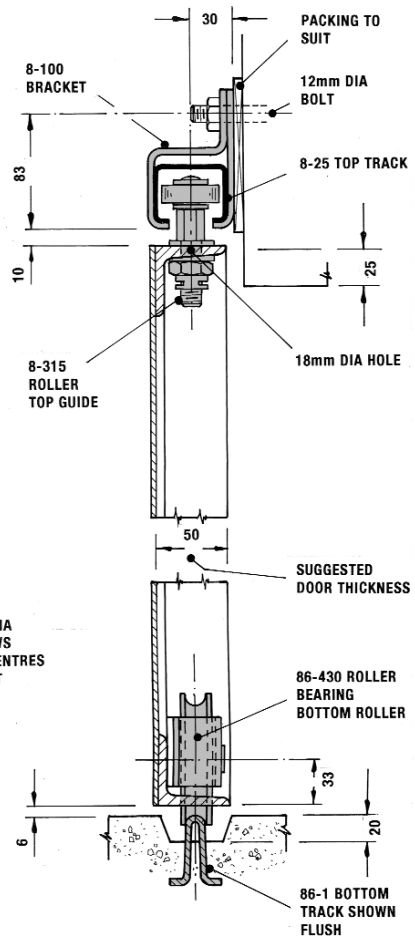
ALTERNATIVE HEAD SECTION DOUBLE PARALLEL TRACKS



ALTERNATIVE HEAD SECTION SOFFIT FIXING



86-430 BOTTOM ROLLER FOR METAL DOORS SUPPLIED UNDRILLED



SECTION THROUGH METAL DOOR

