

# Straightaway 700 & 710 Bottom Rolling Door Gear

## FOR STRAIGHT SLIDING DOORS AND WINDOWS

### APPLICATION

Bottom rolling straight sliding doors, timber patio doors and windows. For residences, hotels, hospitals, etc.

### RANGE

Gear Type	700	710
Maximum door weight	115kg (250 lb)	180kg (400 lb)
Maximum door height	2.4m (8ft)	3.0m (10ft)

The area of a single sliding leaf should be related to all other factors.

### DOOR CONSTRUCTION

Door thickness 30 to 60mm, width one third height minimum, handle height three fifths from bottom for best results. The sliding panel when fully open should project a minimum of 65mm to avoid fingers becoming trapped between handle and fixed panel. Bottom rail should be of sufficient depth to house roller casing.

### FIXING

Top guide track soffit fixed. Floor tracks may be recessed or proud. Mortice for bottom rollers must fit tight around roller casing and weight of sliding door carried on top of casing above wheel.

### BOTTOM ROLLERS

70-402 Bottom roller for 66-1, 66-3 and 70-3 tracks. Die cast casings, nylon wheels with needle bearings. 71-402 Bottom rollers for 70-3 track, die cast casing, steel wheel, ball bearings. Packed in pairs.

### BOTTOM TRACKS

66-1 steel, 66-3 and 70-3 Brass. Drilled and c/sk for woodscrews. Lengths 1.8m to 3.0m.

### TOP GUIDES

44-362 for 44-2 and 44-3 channel, aluminium rattleproof with woolpile. 7-362 for 7-20 track, twin wheels, rattleproof.

### TOP TRACK & CHANNEL

44-2 Aluminium or 44-3 Brass. 7-20 Steel track galvanised to BS EN 10142. Drilled and c/sk for woodscrews. Lengths 1.8m to 3.0m.

### FURNITURE

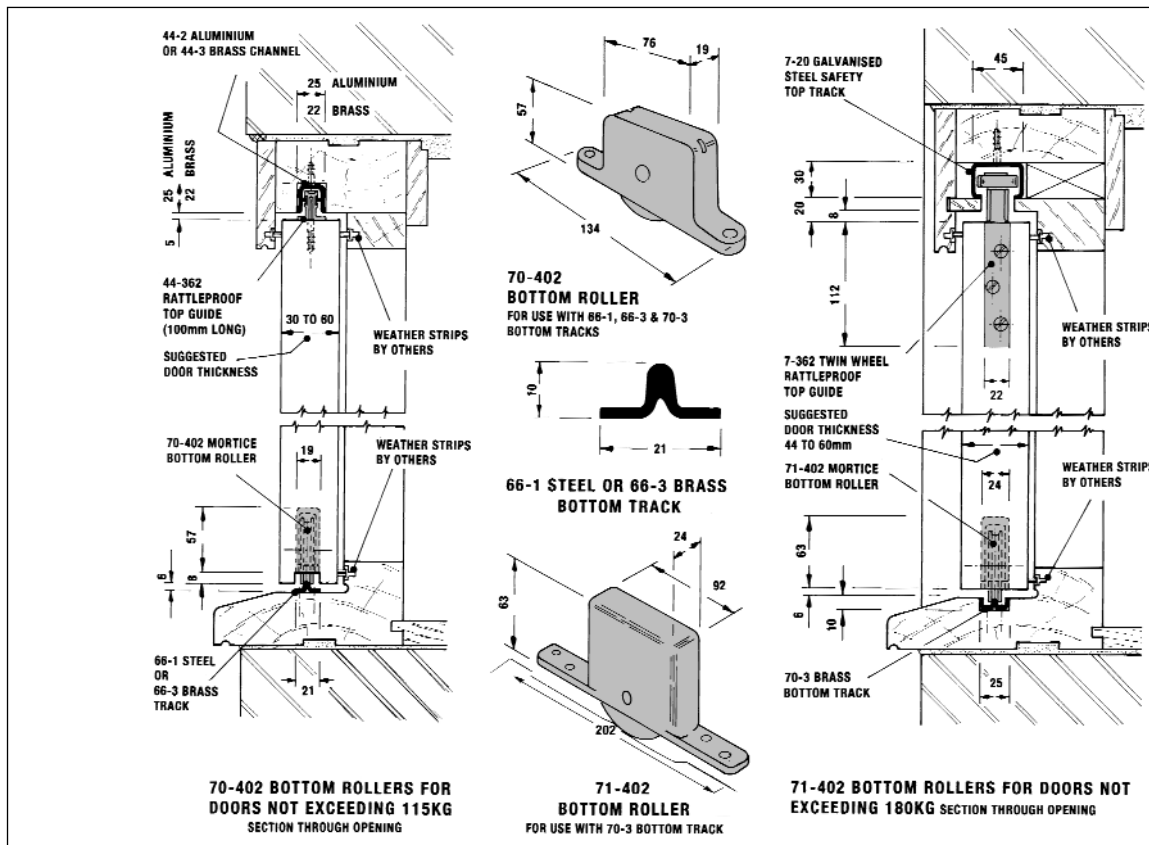
A range of door furniture is available.

### FINISHES

Rollers self-colour, tracks as above.

### DRAUGHT EXCLUDER

97-774 Brush Welt with aluminium retaining strip available in 2.4m lengths.

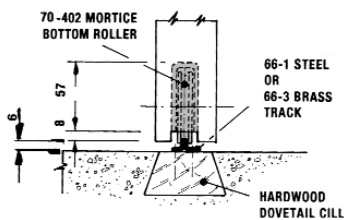


### EXAMPLE (Straightaway 710)

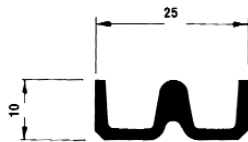
Quantities for 2 bi-parting timber doors in a 3m wide opening. Doors 2.1m high x 44mm thick, weight 150kg per door.

#### A TYPICAL BILL OF QUANTITIES

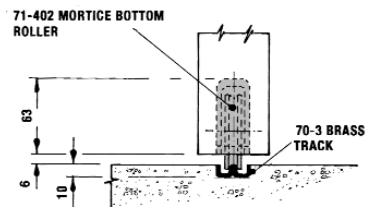
ITEM				
A	7-20	Top guide track	6	LIN.M
B	7-362	Top guides with screws	4	NO.
C	71-402	Bottom rollers with screws (pair)	2	PAIR
D	70-3	Bottom track	6	LIN.M
E	97-722	Rubber buffer Weather strips by others	2	NO.



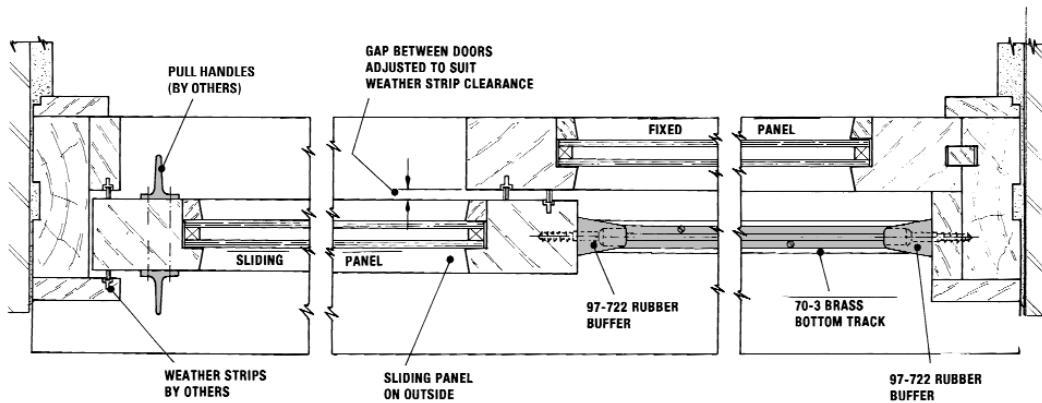
ALTERNATIVE ARRANGEMENT FOR  
66-1 OR 66-3 BOTTOM TRACK



70-3 BRASS BOTTOM TRACK



ALTERNATIVE ARRANGEMENT FOR  
70-3 BRASS BOTTOM TRACK



SECTIONAL PLAN  
ONE PANEL SLIDING & ONE PANEL FIXED