

# Foldaside 240 Sliding & Folding Door Systems

## FOR TOP HUNG FOLDING PARTITIONS

### APPLICATION

Top hung, light duty, internal folding doors with concealed fittings. For residential applications, etc.

### RANGE

Maximum door weight 36kg (80lb)  
 Maximum door height 2.4m (8ft)  
 Maximum opening width 12.8m (42ft)  
 Maximum door leaf width 800mm (2ft 8in)

Up to 8 leaves may be hinged together. Loose or floating suites of door leaves are not recommended, alternatively use Foldaside 210 pages 24-25.

### DOOR CONSTRUCTION

Door thickness 35 to 44mm. Width of door leaves vary according to arrangements; refer to drawings for details. Rebating to suit hanger aprons is shown. Swing leaves are best hinged to jambs. When hinged to folding suites reduce door leaf widths to 700mm and use four wheel hangers adjoining 'swinger'. Always engage holdback catch before operating.

### FIXING

Track brackets usually soffit fixed. Universal soffit bracket designed for ease of fixing and versatility. Additional brackets required where doors fold. All hangers have vertical adjustment.

Floor channel unnecessary under swing leaves.

### HANGERS

All steel, ball bearing lubricated for life. 2-240 with two wheels. 2-241 with four wheels.

### TRACK

2-16 (1.6mm) Galvanised steel to BS EN 10142. Standard Lengths 1.8m to 3.0m.

### TRACK BRACKETS

Steel. See drawing and range on page 3.

### DOOR GUIDES

41-340 Steel angle plate fits rebate of door. Nylon swivel.

### FLOOR CHANNEL

41-2 Aluminium. Drilled and countersunk for timber. Lengths 1.8m to 3.0m.

### FOLDASIDE BUTT HINGES

95-520 Steel, size 75 x 50mm. 95-541 Aluminium, anodised with stainless washers and pins, size 75 x 50mm. All specially drilled.

### JAMB PIVOTS

95-518 Steel and brass jamb pivot set. For use with all equal width leaves.

### FURNITURE

A range of furniture is shown on page 5.

### FINISHES

Top track galvanised. Aprons, brackets and pivots, zinc plated. Furniture usually satin anodised.

### BOLTS AND SCREWS

Included with all fittings except track brackets.

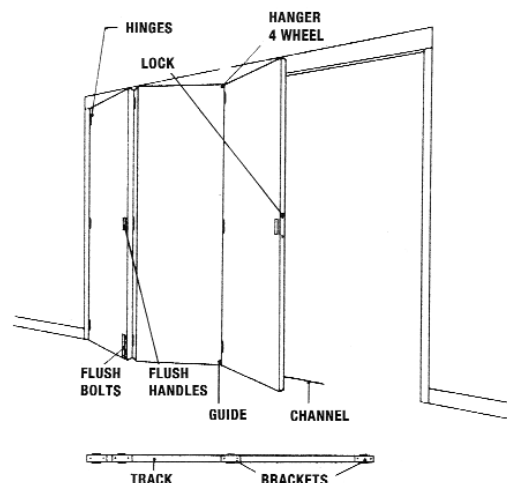
**SPECIAL NOTE:** When Jamb pivots are replaced by hinges, particular attention should be paid by the joiner to leaf sizes and the use of Dimension A or B as shown on the opposite page.

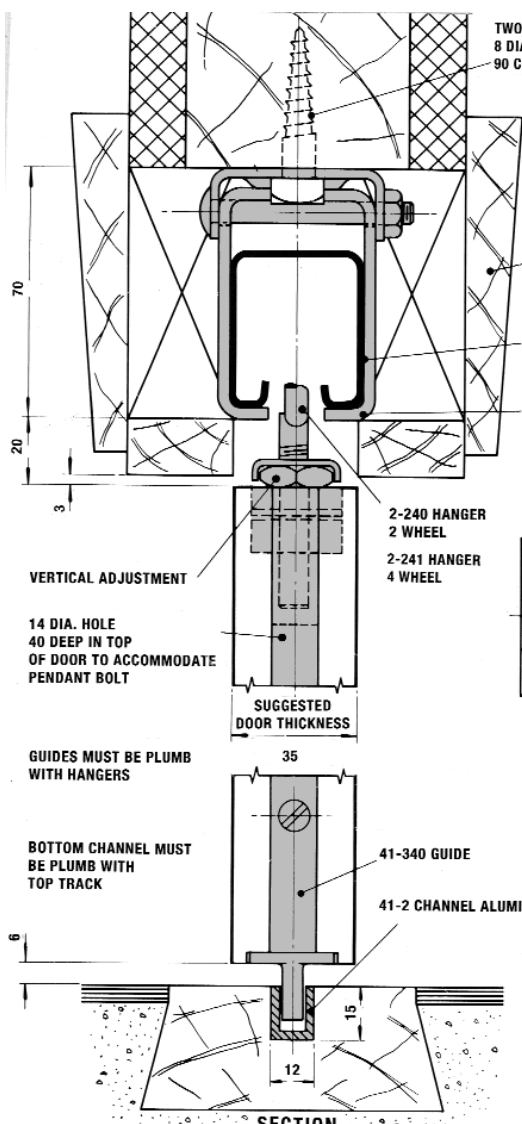
## EXAMPLE

**QUANTITIES FOR A DOOR PARTITION 2.1m wide x 2.2m high. Weight of each leaf 30kg. Three leaves folding one way, end leaf hinged to jamb.**

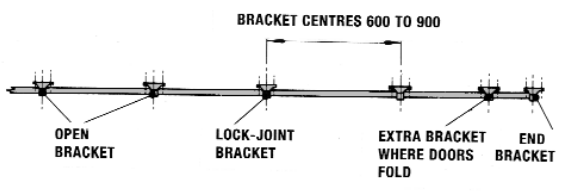
### A TYPICAL BILL OF QUANTITIES

| ITEM |        |  |     |       |
|------|--------|--|-----|-------|
| A    | 2-16   | Track 1 x 1.8m                             | 1.8 | LIN.M |
| B    | 2-150  | Bracket, open. soffit fixing               | 4   | NO.   |
| C    | 2-051  | Closed end piece                           | 1   | PR.   |
| D    |        | Bolts for brackets (by others)             | 8   | NO.   |
| E    | 2-241  | Hanger, four wheel                         | 1   | NO.   |
| F    | 95-541 | Foldaside aluminium hinges S.A.A.          | 3   | PACKS |
| G    | 41-340 | Bottom guide                               | 1   | NO.   |
| H    | 41-2   | Floor channel aluminium d/c/sk<br>1 x 1.8m | 1.8 | LIN.M |
| J    | 95-675 | Flush bolt S.A.A.                          | 1   | NO.   |
| K    | 95-617 | Flush handle S.C.                          | 3   | NO.   |
| L    | 95-665 | Holdback catch                             | 1   | NO.   |
| M    | 95-633 | Flush ring handles S.A.A.                  | 2   | NO.   |
| N    | 95-646 | Mortice lock                               | 1   | NO.   |

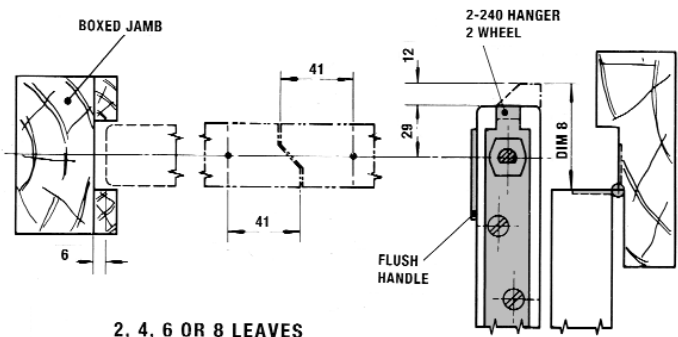




| STANDARD TRACK LENGTHS |     |     |     |        |
|------------------------|-----|-----|-----|--------|
| 1.8                    | 2.1 | 2.4 | 3.0 | METRES |



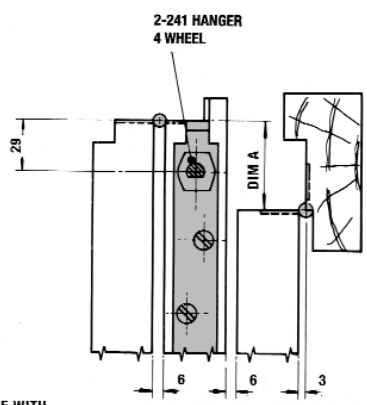
NOTE: THE CENTRE MEETING JOINT DETAIL IS ONLY REQUIRED WHERE SUITES CONTAINING AN EVEN NUMBER OF DOORS MEET WITHIN THE OPENING



2, 4, 6 OR 8 LEAVES  
ONE OR BOTH-WAYS

**DIM 'A'**  
29 +  
HALF THICKNESS OF DOOR  
+ OFFSET OF HINGES  
EXAMPLE FOR 35 DOOR  
 $29 + 18 + 3 = 50$

**DIM 'B'**  
29 +  
HALF THICKNESS OF DOOR  
+ OFFSET OF HINGES + 12  
EXAMPLE FOR 35 DOOR  
 $29 + 18 + 3 + 12 = 62$

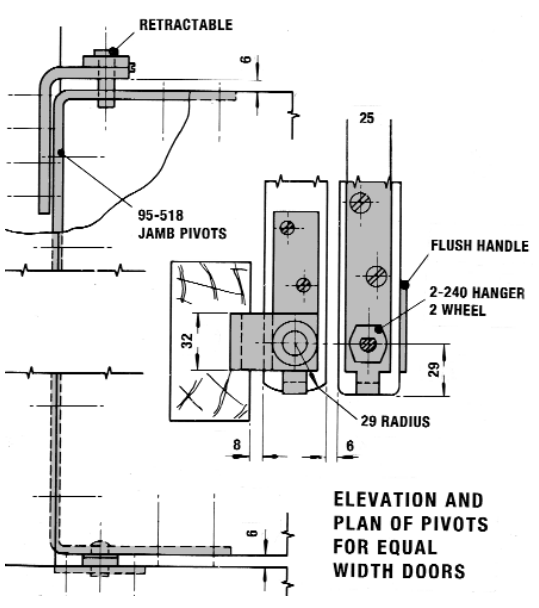


FLUSH HANDLE WITH  
ROLLER CATCH OR  
FLUSH RING HANDLES  
WITH MORTICE LOCK

3, 5 OR 7  
LEAVES ONE WAY

75 x 50  
FOLDSIDE  
HINGES

FLUSH HANDLE  
FLUSH BOLT



ELEVATION AND  
PLAN OF PIVOTS  
FOR EQUAL  
WIDTH DOORS

WHEN JAMB PIVOTS ARE REPLACED BY HINGES, PARTICULAR ATTENTION SHOULD BE PAID BY THE JOINER TO LEAF SIZES AND THE USE OF DIMENSION A OR B AS SHOWN

**DOOR ARRANGEMENTS**  
FROM 2 TO 8 LEAVES ONE WAY-  
WITH OR WITHOUT SWING LEAF  
ON OPPOSITE JAMB  
FROM 2 TO 8 LEAVES BOTH WAYS  
FROM 2 TO 8 LEAVED ONE OR BOTH  
WAYS ON PIVOTS