

Double 60 Wardrobe Sliding Door Gear

FOR TOP HUNG DOORS OPERATING ON A ONE-PIECE DOUBLE TRACK

APPLICATION

For wardrobes, cupboards and similar doors.
Light domestic use, normal handling.

RANGE

- Maximum door weight 27kg (60lb).
- Maximum door height 2m (6ft 6ins).
- Maximum door width 1m (3ft 3ins).

DOOR CONSTRUCTION

Door thickness 22 to 35mm. Frame width 30mm minimum to accommodate hanger aprons. Door width one quarter height minimum, handle height two thirds from bottom for best results.

FIXING

Soffit fixed, one piece double top track. Fixed track centres need adjustable gaps between doors. Bottom guides recessed or proud. Position hangers close to edge of doors.

HANGERS

Nylon wheels, steel axles, plated steel adjustable aprons.

TOP TRACK

Aluminium drilled for soffit fixing.

BOTTOM GUIDES

Nylon, woodscrew fixing.

DOOR STOP

97-728 Nylon.

FINGER PULL

95-611 White plastic, size 32mm diameter, 8mm deep.

DOUBLE 60 WARDROBE SLIDING DOOR GEAR

STANDARD TRACKSETS

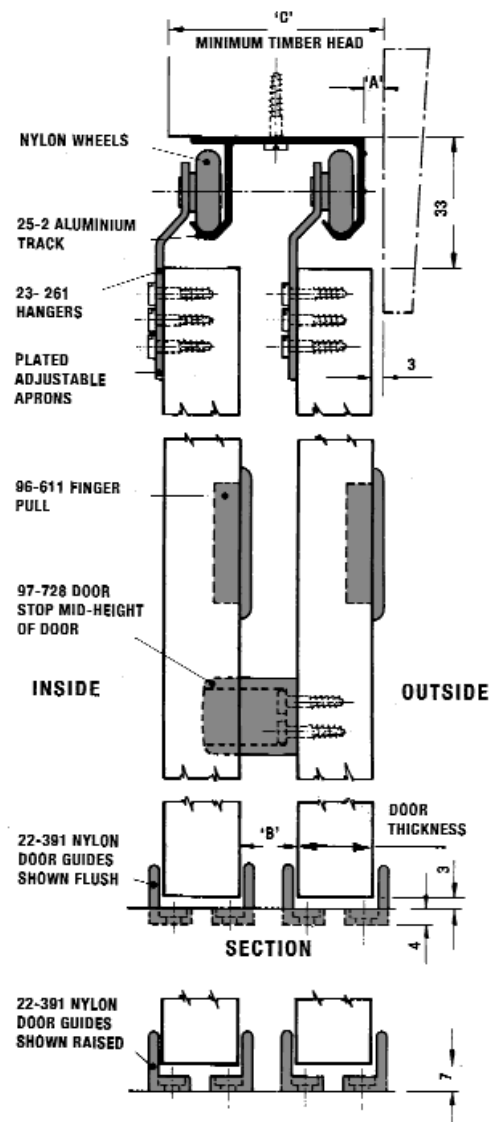
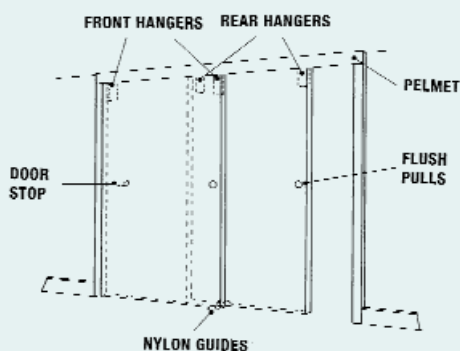
SET 4D – For two doors within 1.2m opening, comprising one 1.2m length of double one-piece top track, 2 pairs of hangers, 4 nylon guides, 2 finger pulls, 1 door stop and all necessary screws.

SET 5D – For two doors within 1.5m opening, as above but comprising 1.5m track length.

SET 6D – For two doors within 1.8m opening as above but comprising 1.8m track length.

SET 8D – For three doors within 2.4m opening as above but comprising 2.4m track length and extra pair of hangers, guides and handle.

SET 1TD – Single door component pack for adding extra door per opening. Contents, all necessary hangers, guides, handle and screws for one door.



DOOR THICKNESS	DIM 'A'	DIM 'B'	DIM 'C'
35	22.5	6.5	76
32	19.5	9.5	73
28	14.5	13.5	68
25	11.5	16.5	65
22	8.5	19.5	62

